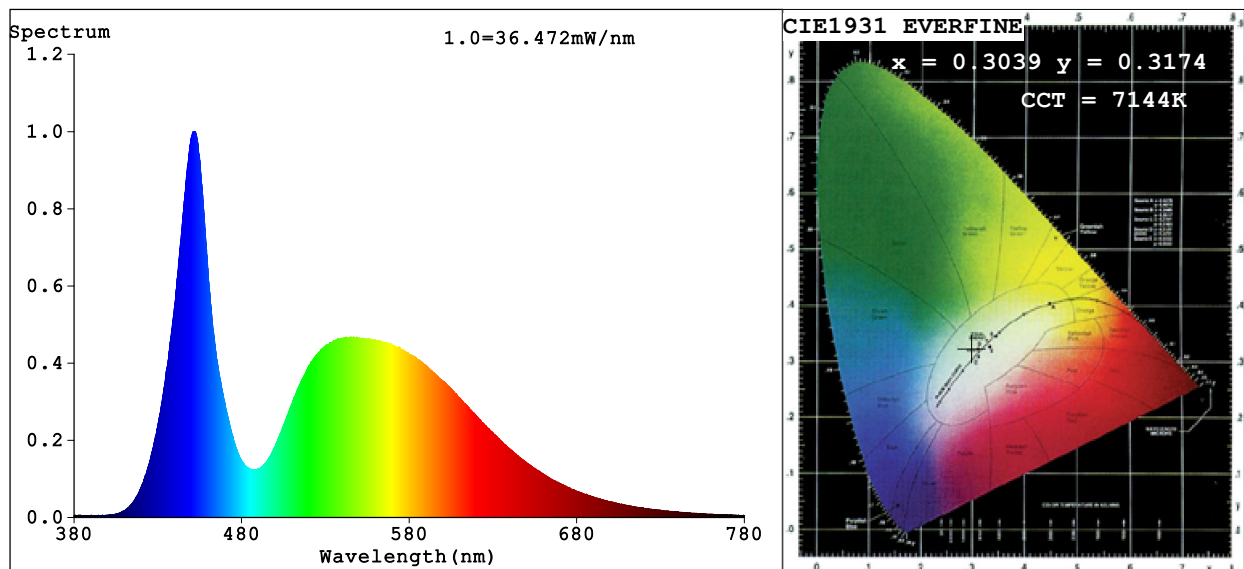


Spectrum Test Report



Color Parameters:

Chromaticity Coordinate: $x=0.3039$ $y=0.3174$ $u'=0.1960$ $v'=0.4607$

CCT=7144K (Duv=0.0018) Dominant WL:Ld =484.4nm Purity=11.2%

Ratio:R=12.0% G=83.4% B=4.6%; Peak WL:Lp=452.2nm FWHM=23.9nm

Render Index:Ra=75.0 CRI=66.0 TM30:Rf=72 Rg=93

R1 =74 R2 =78 R3 =78 R4 =76 R5 =74 R6 =70 R7 =84

R8 =66 R9 =0 R10=45 R11=73 R12=43 R13=74 R14=88 R15=70

Photo Parameters:

Flux = 1016 lm Eff. : 82.14 lm/W Fe = 3.277 W

Electrical parameters:

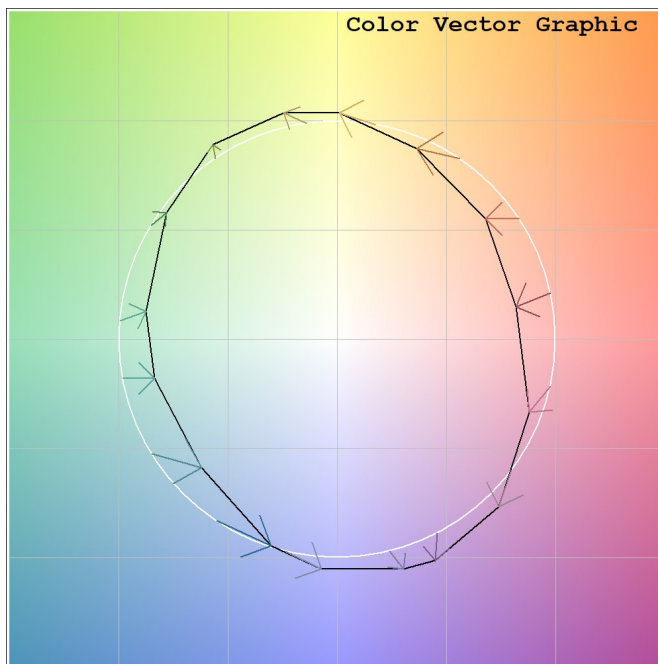
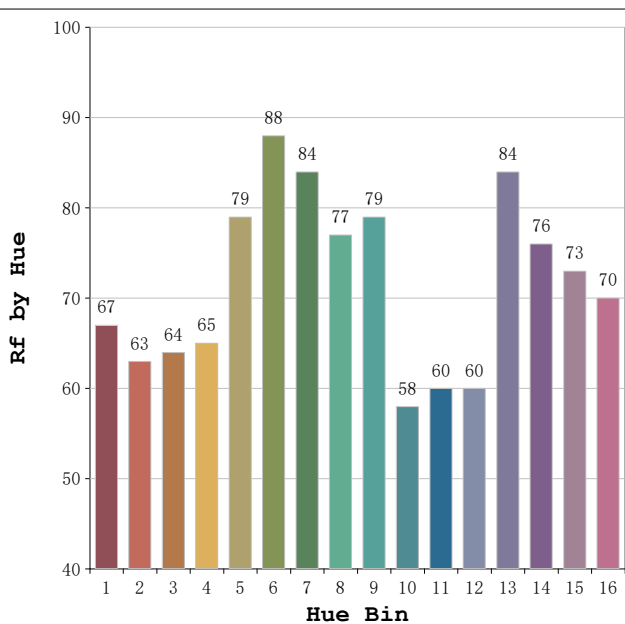
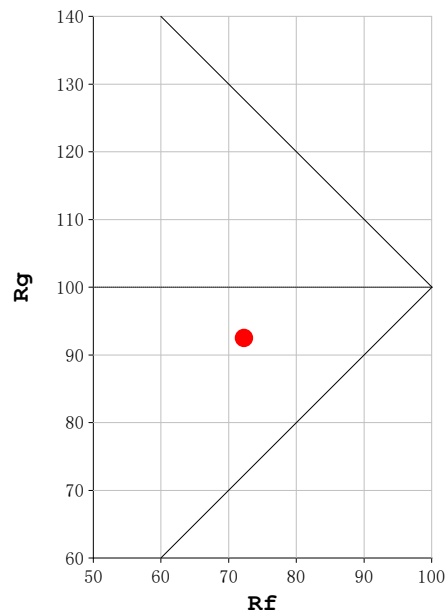
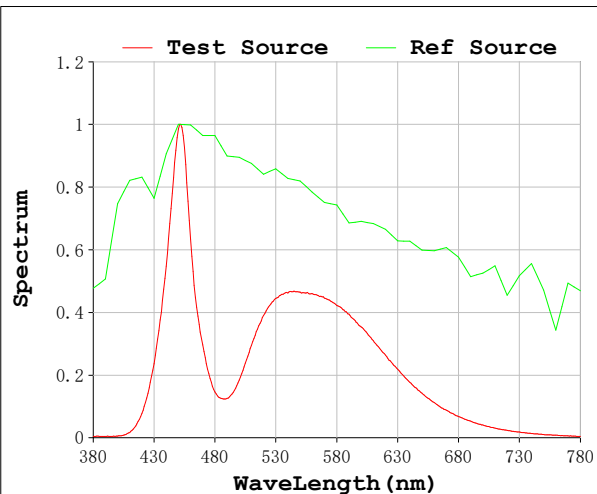
V = 11.998 V I = 1.031 A P = 12.37 W PF = 1.000

Status: Integral T = 989 ms Ip = 46857 (71%)

Model:Ecoled Bali 7000K
Tester:Sergio Carneros
Temperature:25Deg
Manufacturer:Luz negra

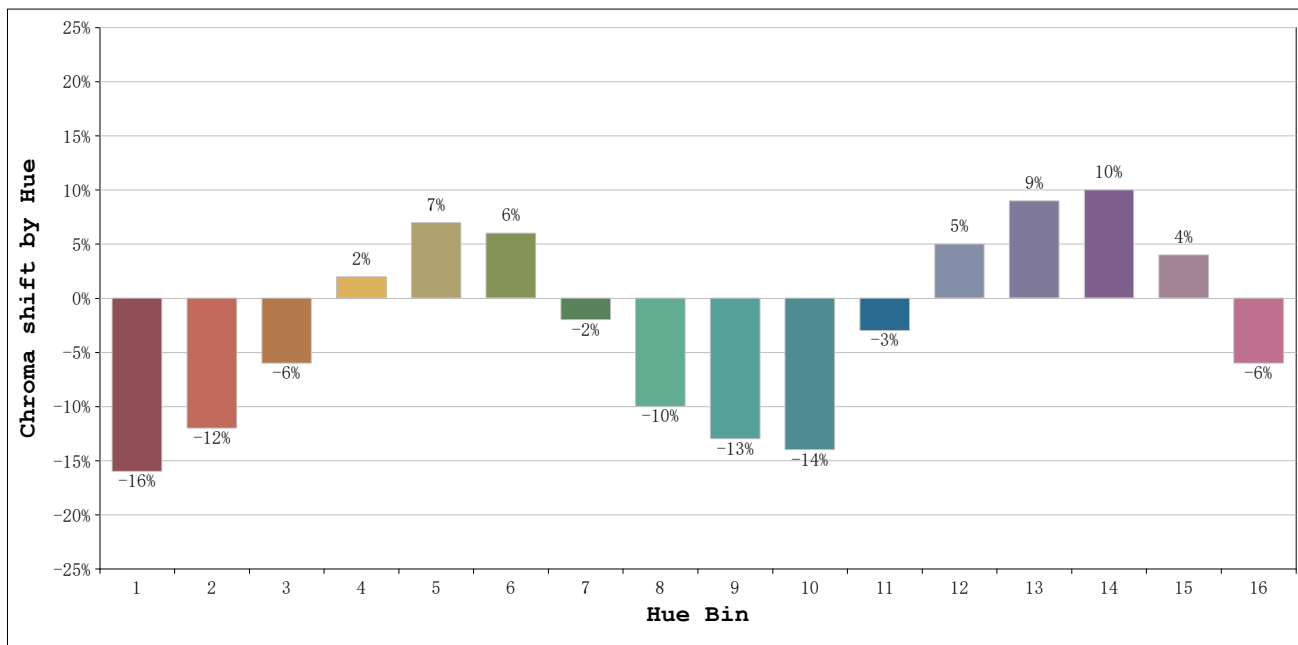
Number: 35.006
Date:03-06-2026 14:45:54
Humidity:57%
Remarks:100cm de tira flexible

Rf: 72 **CCT: 7144 K** **u': 0.1960**
Rg: 93 **Duv: 0.0018** **v': 0.4607**



Model:Ecoled Bali 7000K
 Tester:Sergio Carneros
 Temperature:25Deg
 Manufacturer:Luz negra

Number: 35.006
 Date:03-06-2026 14:45:54
 Humidity:57%
 Remarks:100cm de tira flexible



			Graphic shift(%)	
Hue Bin	Hue Angle	Rf	Chroma	Hue
1	0.0° - 22.5°	67	-16	-2
2	22.5° - 45.0°	63	-12	9
3	45.0° - 67.5°	64	-6	19
4	67.5° - 90.0°	65	2	17
5	90.0° - 112.5°	79	7	9
6	112.5° - 135.0°	88	6	-1
7	135.0° - 157.5°	84	-2	-8
8	157.5° - 180.0°	77	-10	-6
9	180.0° - 202.5°	79	-13	3
10	202.5° - 225.0°	58	-14	18
11	225.0° - 247.5°	60	-3	27
12	247.5° - 270.0°	60	5	18
13	270.0° - 292.5°	84	9	5
14	292.5° - 315.0°	76	10	-7
15	315.0° - 337.5°	73	4	-16
16	337.5° - 360.0°	70	-6	-13

Model:Ecoled Bali 7000K
 Tester:Sergio Carneros
 Temperature:25Deg
 Manufacturer:Luz negra

Number: 35.006
 Date:03-06-2026 14:45:54
 Humidity:57%
 Remarks:100cm de tira flexible